

Union County

Existing Land Use Plan Map 2010

R17E

R18E

R19E

R20E

R21E

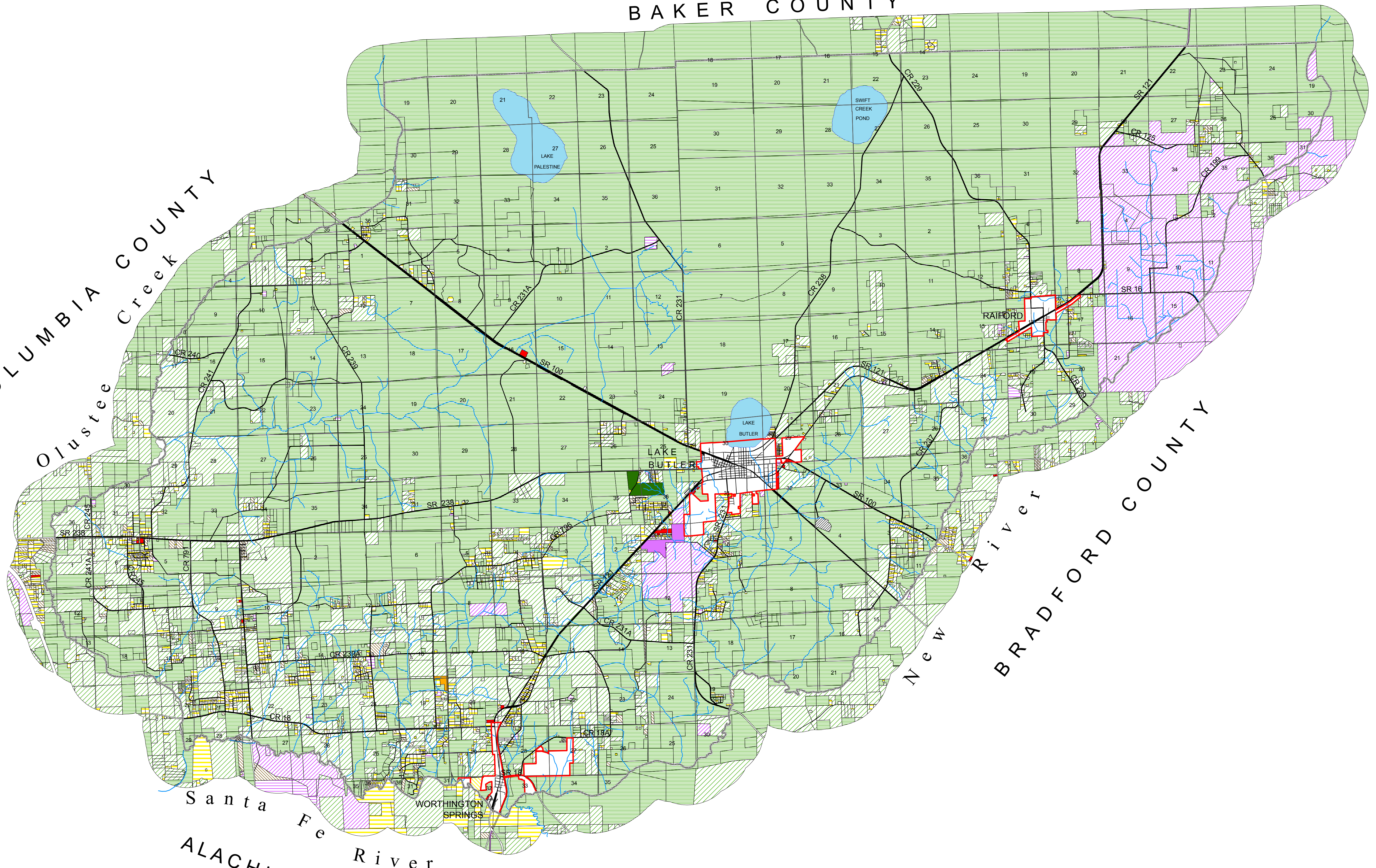
T4S

T5S

T6S

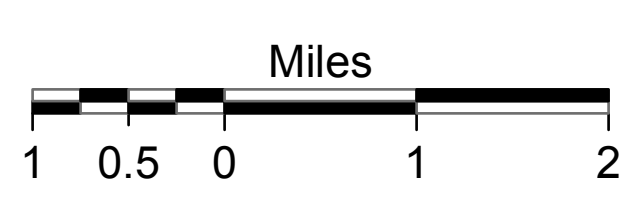
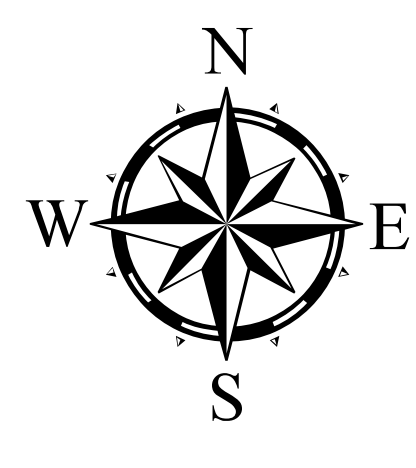
BAKER COUNTY

COLUMBIA COUNTY
Oluisee Creek



BRADFORD COUNTY
New River

ALACHUA COUNTY
Santa Fe River



EXISTING LAND USE MAP CLASSIFICATIONS

- Conservation
- Agriculture - Forest
- Agriculture - Row Crop/Pasture
- Vacant Land
- Recreation
- Public
- Institutional
- Residential - Low (≤ 2 d.u. per acre)
- Residential - Moderate (> 2 d.u. per acre) but (≤ 4 d.u. per acre)
- Residential - Medium (> 4 d.u. per acre) but (≤ 8 d.u. per acre)
- Residential - High (> 8 d.u. per acre) but (≤ 20 d.u. per acre)
- Commercial
- Industrial

OTHER MAP FEATURES

- County Boundary Line
- Incorporated Area
- Lake
- River or Stream

Source: County Property Appraiser, 2010.
W:\FLUM_ZN\Union\UNEX7.mxd

